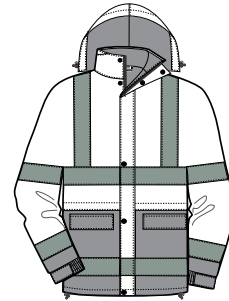
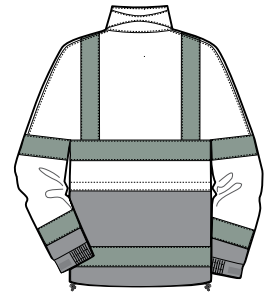


# Class 3 Windbreaker Safety Jacket



Front





Back

## CSJ25

- ANSI/ISEA 107-2004 certified Class 3
- Water resistant 100% PU shell, 100% polyester backing
- 8000 MM waterproof rating
- Snap-off hood with drawcord and toggle for adjustability
- Two-way black Vislon zipper
- Internal storm flap

**Care Instructions:**  
**Do Not Bleach**  
**Tumble Dry low**  
**Permanent Press**  
**Do Not Iron**  
**Do Not Dry Clean**

| Finished Measurements in Inches |    |        |        |        |    |        |        |
|---------------------------------|----|--------|--------|--------|----|--------|--------|
| Size                            | S  | M      | L      | XL     | 2X | 3X     | 4X     |
| Chest                           | 24 | 25 1/2 | 27     | 28 1/2 | 30 | 32     | 34     |
| Length                          | 30 | 30 1/2 | 31     | 32     | 33 | 33 1/2 | 34     |
| Sleeve                          | 36 | 36 3/4 | 37 1/2 | 38 1/4 | 39 | 39 3/4 | 40 1/2 |

| Colors  |               |
|---|---------------|
|  | Safety Orange |
|  | Safety Yellow |

**Please Note:**  
 Colors shown are approximate and for reference only. For closest match see PMS colors, or for exact match, returnable samples and grommets are available.

| Color Chart |                           |                           |
|-------------|---------------------------|---------------------------|
| Base Color  | Safety Orange             | Safety Yellow             |
| Textile PMS | flourescent dye, no match | flourescent dye, no match |
| General PMS | flourescent dye, no match | flourescent dye, no match |